



**NU-AIR TYRE**<sup>®</sup>  
series  
Semi-Pneumatic Tire Technology<sup>™</sup>

# Solid Cushion Tires



**McLaren has set the industry standard for high quality solid cushion tires.**

You can rely on our continuous field testing and product improvement to deliver a flat-proof air-cushioned tire with unsurpassed longevity and wear resistance.

Integrating the strength and stability of solid tires with the smooth, cushioned ride of pneumatic tires, McLaren offers a plethora of options to improve the safety on your jobsite and drastically boost the performance of your entire equipment fleet. **On any terrain!**





# Solid Cushion Tires



At the heart of McLaren's innovative tire portfolio is our unique **Semi-Pneumatic Tire Technology<sup>™</sup>**

It's a true engineering feat, based on years of research, testing, and user feedback from hundreds of job sites and applications. Our technology provides maximum performance and equipment longevity on any terrain.

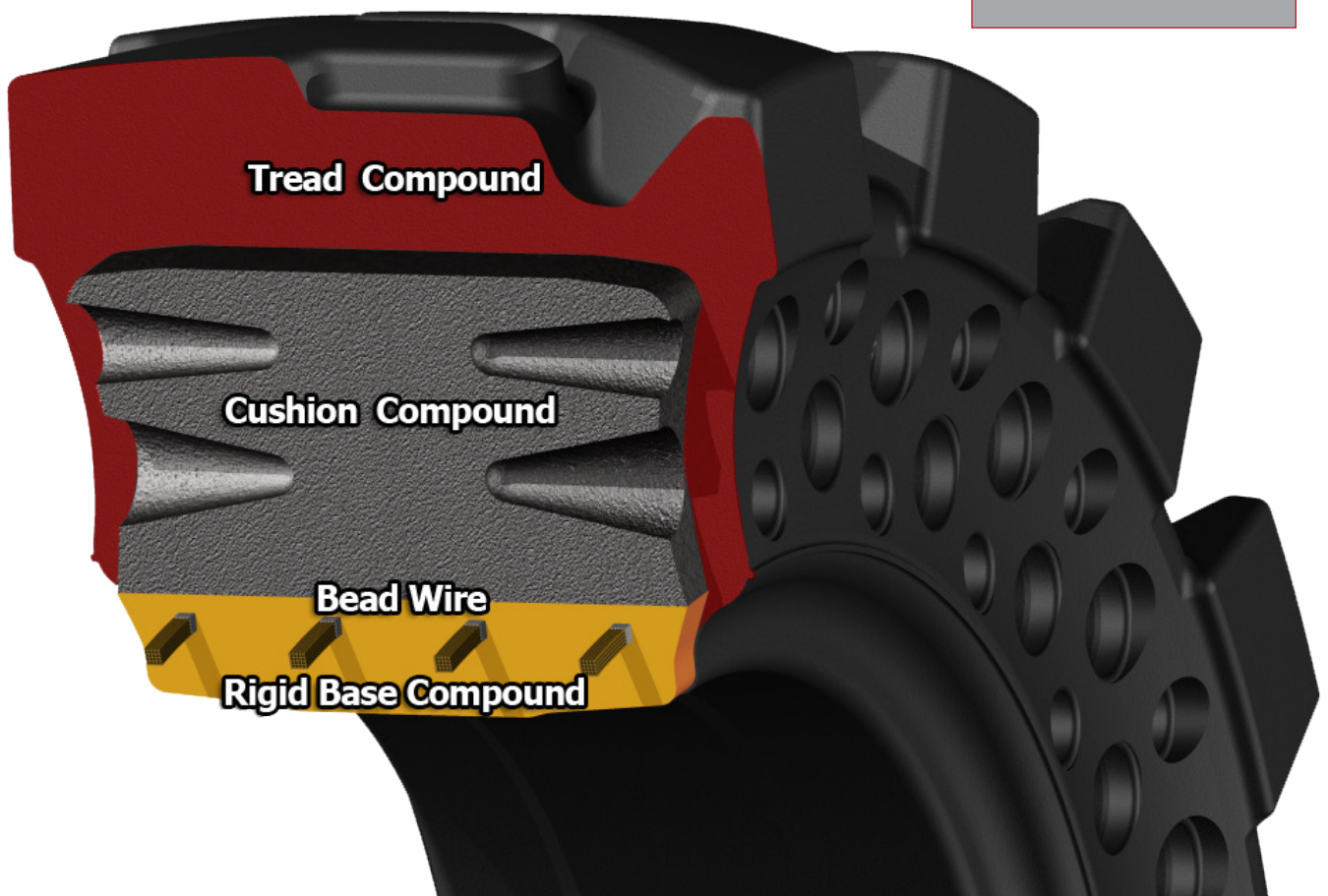
McLaren's advanced tire structure, superior rubber compounds, and uniquely engineered sidewalls prevent downtime from cuts and snags even in the most severe cutting conditions.

Cushioning

Durability

Stability

Efficiency



**NU-AIR TYRE<sup>®</sup>**  
series  
Semi-Pneumatic Tire Technology<sup>™</sup>

# Solid Cushion Tires



## Proven performance on any job site!

## Cushioning

Cushioning is crucial, often serving as the only suspension on many types of equipment.

McLaren tire technology is the best solution in the industry. It incorporates an array of up to four offset circular rows of deep cushioning holes in the sidewall to optimize flexibility and shock absorption.

The result? Unparalleled tire performance on any terrain; reduced machine bouncing; and operator safety.



## Durability

McLaren solid cushion tires last 3 to 5 times longer than standard pneumatic tires. This results in a substantially extended service life of up to 3,500 work hours for skid steers, and up to 5,000 hours on larger equipment, allowing them to operate in any conditions with zero downtime.

## Stability

McLaren tires lower the center of gravity of the machine, which improves stability and safety. This significantly reduces equipment bouncing, especially at higher speeds.

This feature is a very welcome benefit to operators upgrading from pneumatic or foam-filled tires to solid cushion tires.



# Solid Cushion Tires



## Attachment-friendly tires!

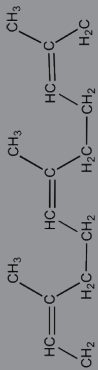
**Modern equipment attachments are viciously aggressive!**



Sharp attachments

Grapples, chain trenchers, hydraulic breakers, over-the-tire tracks, and many other types of equipment attachments boost performance on the job site. But they can also be a hazard to the pneumatic tires of all machines in the proximity. McLaren solid cushion tires enable any machine to operate safely at peak performance even with the most demanding attachments installed.

## Non-marking rubber compounds!



McLaren solid cushion tires are available in a various innovative rubber compounds to match the specific application requirements.

Tires can be ordered with traditional black or non-marking (orange or gray) compounds.



## Rims included!



McLaren solid cushion tires are delivered already mounted on standard solid tire multi-piece rims, which allows a quick and easy installtion on your machine. Rimless solid cushion tires are available for those machines using the same tire size for pneumatic and solid tires. Once a McLaren tire user you can also reduce your tire maintenance costs with replacement rimless tires.

**YOUR CHOICE**



# Solid Cushion Tires



## There is a McLaren tread pattern for every job!

All tread patterns feature a wider footprint than pneumatic or foam-filled tires for better wear and machine stability



**DT**



**DT for Off-Road and Dirt.** It has 2 - 3 times deeper lugs than pneumatic or foam-filled tires with up to 2.2" of lug depth. McLaren's specially formulated tread compound increases wear resistance. It has a wider footprint than pneumatic or foam-filled tires for better wear and machine stability.

**AT**



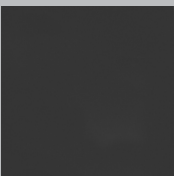
**AT for Abrasive Surfaces.** It features large surface contact to reduce ground pressure and extend service life. It is perfect for demanding asphalt, pavement, concrete, and other hard surface applications, including scrap yards, demolition sites, and operations in the mining and earthmoving industries.

**RT**



**RT for Rocks, Scrap, and Debris.** It is McLaren's solution for operations on rocky terrain. The pattern is well suited for larger machines, such as telehandlers and wheel loaders, and performs well in the toughest environments, including scrap yards and demolition sites.

**SS**



**SS for Flat Concrete and Asphalt.** Sometimes no pattern is the best pattern. The McLaren SS option is mainly for OTR Tires. It is the most practical choice when the machine is only being run on asphalt or concrete. This tread pattern offers maximum surface contact.

# Solid Cushion Tires



**There is a McLaren tire for every machine!**

McLaren solid cushion tires are available for all major equipment types and applications.

Skid Steers



Backhoes



Telehandlers



Wheelloaders





# Solid Cushion Tires



## Key Specifications

Tire Size	Tread Pattern	Cushion Rows	S.W.	Tread Depth	Outer Diameter	Rim Size	Weight	Load Capacity
19x8-12	DT	1	7.1"	1.0"	19.1"	8"x12"	83 lbs	2,640 lbs
23X5.7-12	DT	1	5.7"	1.2"	22.4"	4"x12"	87 lbs	2,863 lbs
23x8.5-12	DT	1	7.3"	1.2"	22.8"	5"x12"	101 lbs	3,310 lbs
27x8.5-15	DT	1	7.9"	1.2"	26.6"	5.5"x15"	143 lbs	4,410 lbs
30x10-16	DT	4	9.1"	1.5"	30.2"	6"x16"	197 lbs	6,600 lbs
30x10-16	AT	4	9.4"	1.7"	30.2"	6"x16"	217 lbs	4,850 lbs
30x8.5-16	DT	2	7.4"	1.5"	30.2"	6"x16"	175 lbs	4,190 lbs
31x10.5-20	DT	2	9.1"	1.5"	31.8"	7"x20"	233 lbs	6,600 lbs
31x8-16	SS	4	7.1"	-	31.8"	6"x16"	217 lbs	5,370 lbs
32.5x15-16	DT	4	14.4"	2.3"	32.3"	11.25"x16"	347 lbs	11,020 lbs
33x12-16	DT	2	10.8"	2.0"	32.7"	8"x16"	271 lbs	8,250 lbs
33x12-20	DT	2	10.8"	1.5"	32.7"	7.5"x20"	270 lbs	7,700 lbs
33x12-22	DT	2	11.3"	2.0"	32.7"	10"x22"	287 lbs	7,700 lbs
33x12-16	AT	4	10.2"	2.2"	32.8"	8"x16"	300 lbs	8,270 lbs
36x14-20	DT	2	13.5"	2.0"	36.0"	11"x20"	438 lbs	10,580 lbs
36.5x14-20	DT	2	13.6"	2.0"	36.2"	11"x20"	437 lbs	10,580 lbs
36.5x12-20	DT	2	11.8"	2.0"	36.8"	8"x20"	703 lbs	7,937 lbs
38.5x14-20	DT	2	13.5"	2.4"	38.5"	11"x20"	489 lbs	9,260 lbs
17.0-20	DT	2	16.9"	2.56"	41.7"	12"x20"	937 lbs	14,990 lbs
18.00-20	DT	2	16.9"	2.56"	41.7"	12x20"	937 lbs	14,990 lbs
385/65-24	DT	2	14.2"	4.6"	41.7"	10"	595 lbs	14,330 lbs
385/70-20	DT	2	14.2"	4.6"	41.7"	10"	677 lbs	14,330 lbs
17.0-24	DT	2	16.9"	2.56"	45.3"	12x24"	970 lbs	16,540 lbs
50x16-24	AT	2	15.8"	3.3"	49.2"	11.5"	1,076 lbs	17,637 lbs
50x13-24	AT	2	12.6"	3.3"	49.2"	8.5"x24"	847 lbs	15,180 lbs
15.5-25	DT	2	15.2"	4.2"	50.0"	12"x25"	1043 lbs	16,500 lbs
50x13-24	DT	2	12.6"	4.2"	50.0"	8.5"x24"	789 lbs	15,180 lbs
53X14-24	AT	2	13.4"	3.5"	52.0"	10"x24"	1,000 lbs	17,600 lbs
17.5-25	DT	2	17.3"	4.9"	52.8"	14"x25"	1,197 lbs	18,700 lbs
17.5-25	AT	2	17.3"	3.5"	52.8"	14"x25"	1,311 lbs	18,700 lbs
17.5-25	SS	2	17.3"	-	52.8"	14"x25"	1,424 lbs	20,900 lbs
53X14-24	DT	2	13.8"	4.4"	52.8"	10"x24"	968 lbs	17,600 lbs
53X14-24	RT	2	14.2"	4.6"	53.1"	10"x24"	1,052 lbs	17,600 lbs
20.5-25	AT	2	20.5"	3.7"	58.3"	17"x25"	1,970 lbs	21,200 lbs
20.5-25	SS	2	20.5"	-	58.3"	17"x25"	2,143 lbs	23,150 lbs
16.00-25	AT	-	16.1"	3.7"	59.1"	11.25"	1,400 lbs	28,660 lbs
23.5-25	AT	2	23.2"	5.9"	63.4"	19.5"x25"	2,661 lbs	26,450 lbs
23.5-25	SS	2	23.2"	-	63.4"	19.5"x25"	2,892 lbs	28,600 lbs
18.00-25	RT	-	19.3"	6.6"	63.6"	13x25"	1,951 lbs	33,069 lbs
23.5-25	DT	2	22.8"	6.6"	63.8"	19.5"x25"	2,491 lbs	26,450 lbs
26.5-25	AT	2	25.6"	7.4"	67.7"	22"x25"	3,461 lbs	32,000 lbs
26.5-25	SS	2	25.6"	-	67.7"	22"x25"	3,759 lbs	35,200 lbs
26.5-25	DT	2	26.4"	7.6"	68.9"	22"x25"	3,479 lbs	32,000 lbs
29.5-25	AT	2	29.1"	7.9"	73.6"	25"x25"	4,773 lbs	40,800 lbs
35/65-33	AT	2	33.5"	7.8"	79.9"	28"x33"	6,010 lbs	52,900 lbs

\* Weight may vary based on custom rim specifications; The above specifications are provided for reference only and may change without notice.

# Solid Cushion Tires



## A trusted global brand!

From OEMs, to rental yards and general contractors, the industry's top performers have vested their trust in McLaren!



**McLaren Industries, Inc.**  
12440 Carson Street  
Hawaiian Gardens, CA 90716, USA  
Toll free (800) 836-0040  
Tel: (310) 212-1333; Fax: (310) 212-5666  
sales@mclarenusa.com

**McLaren Deutschland GmbH**  
65760 Eschborn/Frankfurt, Germany  
Tel: +49-6196-2023-671  
Tel: +49-6196-9994-230  
Email: sales@mclareneurope.com

**McLaren Bulgaria, Ltd.**  
Plovdiv 4020, Bulgaria  
Tel/Fax: +359-32-24-24-00  
Email: sales@mclareneurope.com



## Worldwide Contacts

**McLaren Thailand**  
Rayong 21140, Thailand  
Tel: +66-38-955978 ext.100  
Fax: +66-38-955974  
Email: sales@switzmclaren.com

**McLaren China**  
Taizhou City 318000, China  
Tel/Fax: +86-576-89069-555  
Email: sales@mclarenchina.com